

Temadag DTI 2012

Løsninger til energibesparelser og
reducering af CO2 udslip i dampsystemer

Thomas Maurin, Teknisk Chef
Danmark & Sverige

First for Steam Solutions

Spirax Sarco Ltd.

- 4.500 mennesker i mere end 30 lande, der alle arbejder med samme ide:

Energi og miljørigtige løsninger!

- Europa betjenes primært fra England, Frankrig og Italien.
- Forskningscenter i England
- Egne afdelinger for at kunne kommunikere det væsentlige: Energibesparelser og reducere i CO2 udslip!

First for Steam Solutions

EXPERTISE | SOLUTIONS | SUSTAINABILITY

**spirax
sarco**

Spirax Sarco Danmark

- 18 personer
 - 4 eksterne salgsspecialister der kan dække hele Danmark
 - Intern salgssupport
 - Teknisk support
 - Lager og værksted
 - Serviceafdeling, 4 serviceingeniører, drift og vedligehold, energiaudits, gennemgang vandudladere, positionerer og andre energiforbrugene udstyr.
 - Rådgivning til kunder og rådgivere.
 - Hjemmeside: www.spiraxsarco.com/dk

First for Steam Solutions

EXPERTISE | SOLUTIONS | SUSTAINABILITY

spirax
/sarco

Det moderne dampanlæg

- Langt de fleste fabrikker oplever et stigende pres for at reducere deres energiforbrug og CO2 udslip
- For at imødekomme disse krav må vi have nogle simple løsninger
- Den moderne fabrik burde ikke opleve flashdampspild eller lukke varmt vand ud i kloakken
- Det skal opsamles og genanvendes
- Genanvendelsen bør altid kunne forbedre effektiviteten i processen

First for Steam Solutions

EXPERTISE | SOLUTIONS | SUSTAINABILITY

spirax
/sarco

Største områder med energitab

Flashdamp tab

Varmetab fra forurenset vand

Varmetab fra køletårne

Varmetab fra proces udluftning

Varmetab fra forurenset kondensat



Hvad er damp?

Damptryk		Temperatur	Entalpi kJ/kg			Volumen tør mættet
			Væskevarme	Fordampningsvarme	Total varme	
bar	kPa	°C	h_f	h_{fg}	h_g	m^3/kg
0	0	100	419	2.257	2.676	1,673
1	100	120	506	2.201	2.707	0,881
2	200	134	562	2.163	2.725	0,603
3	300	144	605	2.133	2.738	0,461
4	400	152	671	2.108	2.749	0,374
5	500	159	641	2.086	2.757	0,315
6	600	165	697	2.066	2.763	0,272
7	700	170	721	2.048	2.769	0,24
8	800	175	743	2.031	2.774	0,215
9	900	180	763	2.015	2.778	0,194
10	1000	184	782	2.000	2.782	0,177
11	1100	188	799	1.986	2.785	0,163
12	1200	192	815	1.973	2.788	0,151
13	1300	195	830	1.960	2.790	0,141
14	1400	198	845	1.947	2.792	0,132

First for Steam Solutions

EXPERTISE | SOLUTIONS | SUSTAINABILITY

spirax
sarco

Hvad er flashdamp

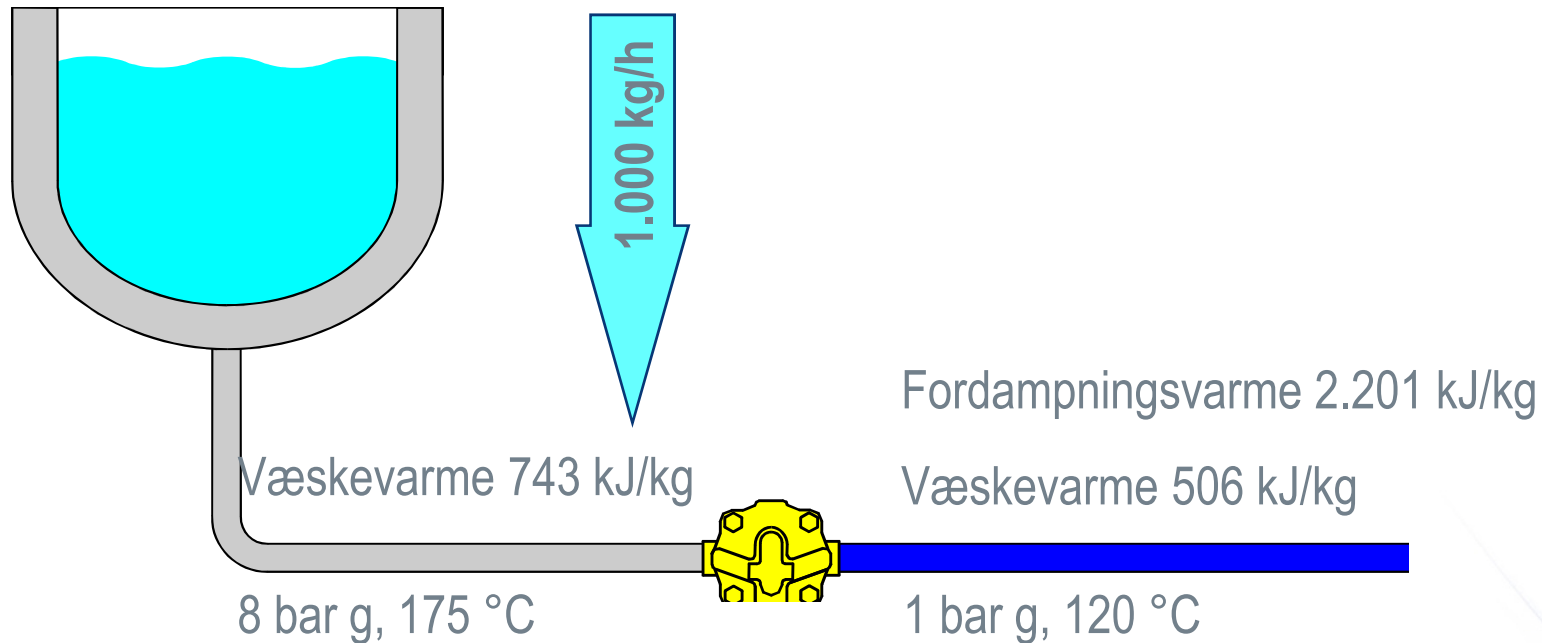
- **Hvad er flashdamp (også kaldet genfordampning)?**
- Flashdamp opstår når kondensat ledes fra et højere tryk til et lavere tryk og derved vil noget af det genfordampe.
- Ved atmosfærisk tryk kan vand ikke eksisterer ved mere en 100 °C - dvs. kommer kondensatet fra 180 °C skal der afgives 80 °C og det sker ved genfordampning – eller flashdamp!
- Hvis denne flashdamp ikke udnyttes opstår der et varmetab ud gennem den nærmeste udluftningsledning
- Det samme sker når der bundblæses fra en dampkedel (8 barg / 175 °C). Her vil der også være et kortvarigt varmetab, som man skal forsøge at genanvende

First for Steam Solutions

EXPERTISE | SOLUTIONS | SUSTAINABILITY

spirax
sarco

Hvad er flashdamp



Regnestykket:

Fordampende væskevarme = $743 - 506 \text{ kJ/kg} = 237 \text{ kJ/kg}$ →

$\frac{237 \text{ kJ/kg}}{2.201 \text{ kJ/kg}} \times 100 = 10,7 \% \text{ Flashdamp}$ → $1000 \text{ kg/h} \times 0,107 = 107 \text{ kg/h Flashdamp}$

107 kg flashdamp svare til 65 kW!

First for Steam Solutions

EXPERTISE | SOLUTIONS | SUSTAINABILITY

spirax
sarco

Flashdamptab



First for Steam Solutions

EXPERTISE | SOLUTIONS | SUSTAINABILITY

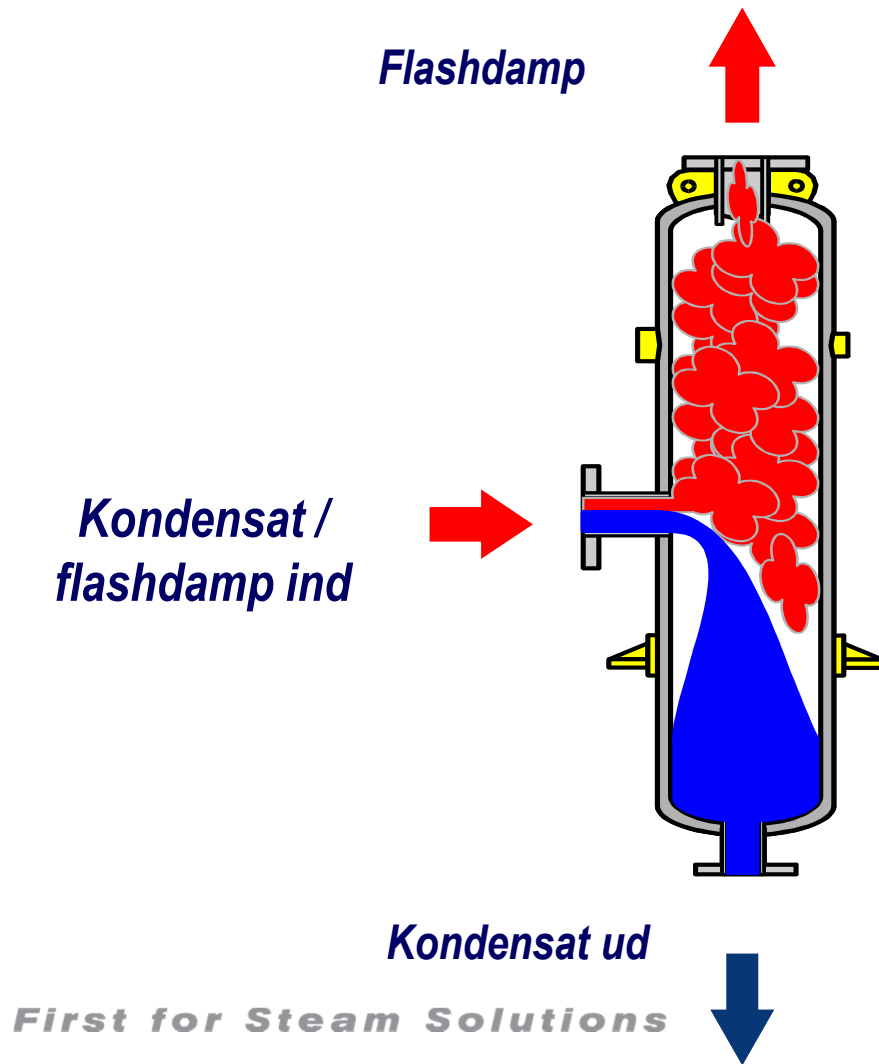
spirax sarco

Løsninger til udnyttelse af flashdamp

First for Steam Solutions

EXPERTISE | SOLUTIONS | SUSTAINABILITY

Adskillelse af flashdamp fra kondensat via flashdampbeholder

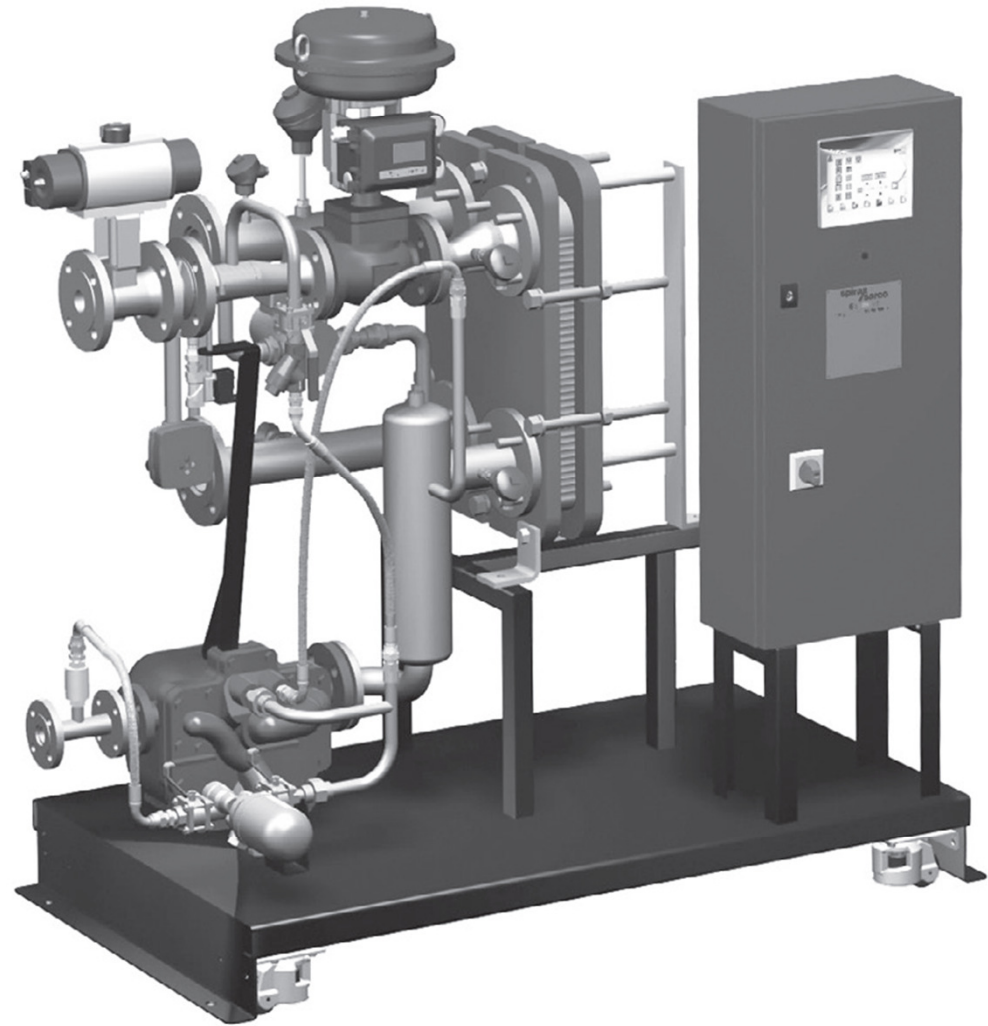


- Adskiller dampen og kondensatet i kondensatrøret.
- Genfordampningens maksimale fremløbshastighed i tanken er 3 m/s.
- Takket være den lave fremløbshastighed i tanken adskilles dampen og kondensatet godt.
- Kondensat falder til bunds og dampen strømmer opad.
- Kondensat udledes fra tanken vha. en svømmervandudlader.

Hvor kan flashdamp udnyttes?

Typiske anvendelsesformål:

- Opvarmning af brugs- og procesvand
- Procesopvarmning
- Opvarmning af fødevand
- Forvarmning af luft
- Luftbefugtning

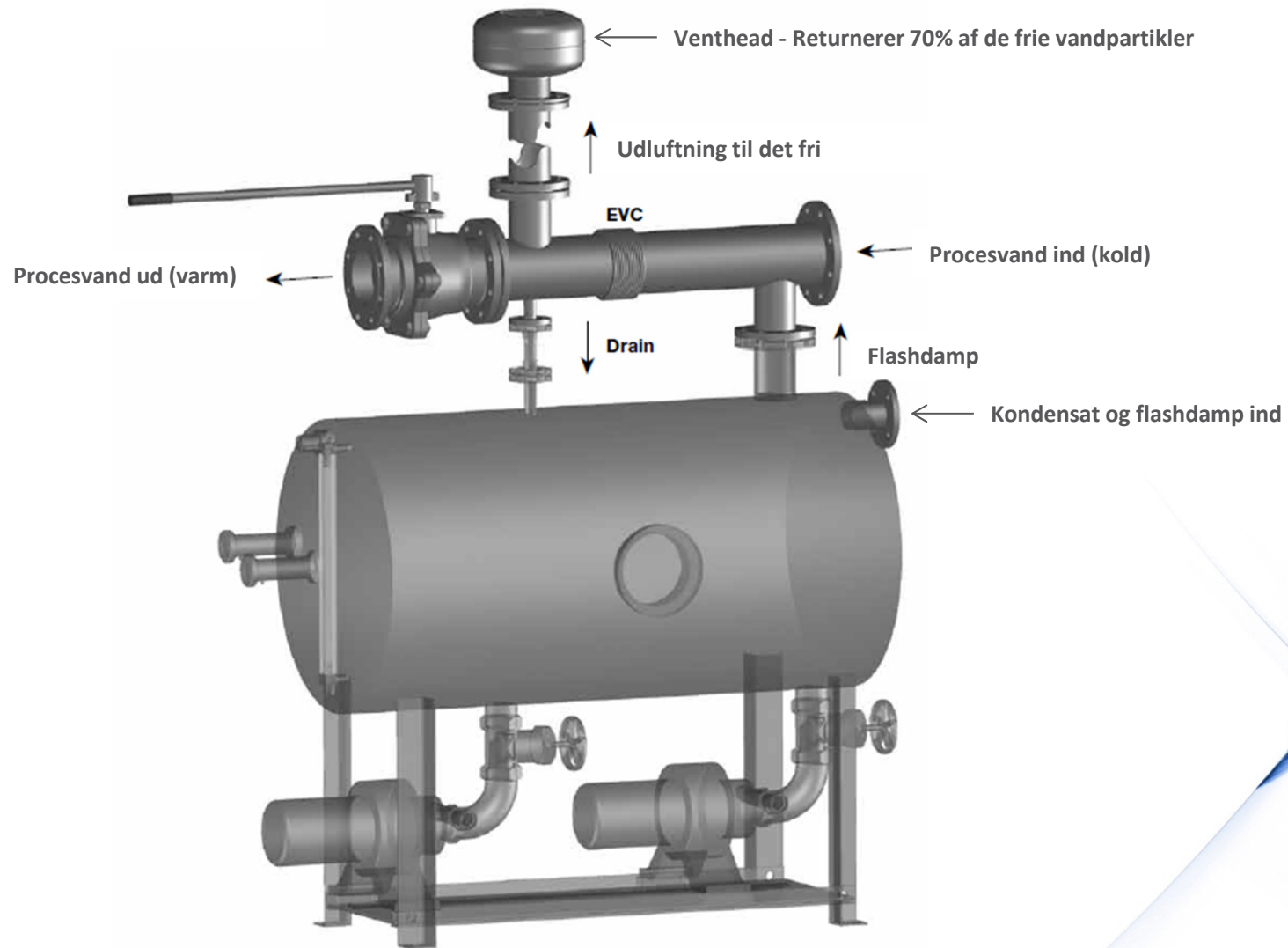


First for Steam Solutions

EXPERTISE | SOLUTIONS | SUSTAINABILITY

spirax
sarco

Flashdamp Condenser

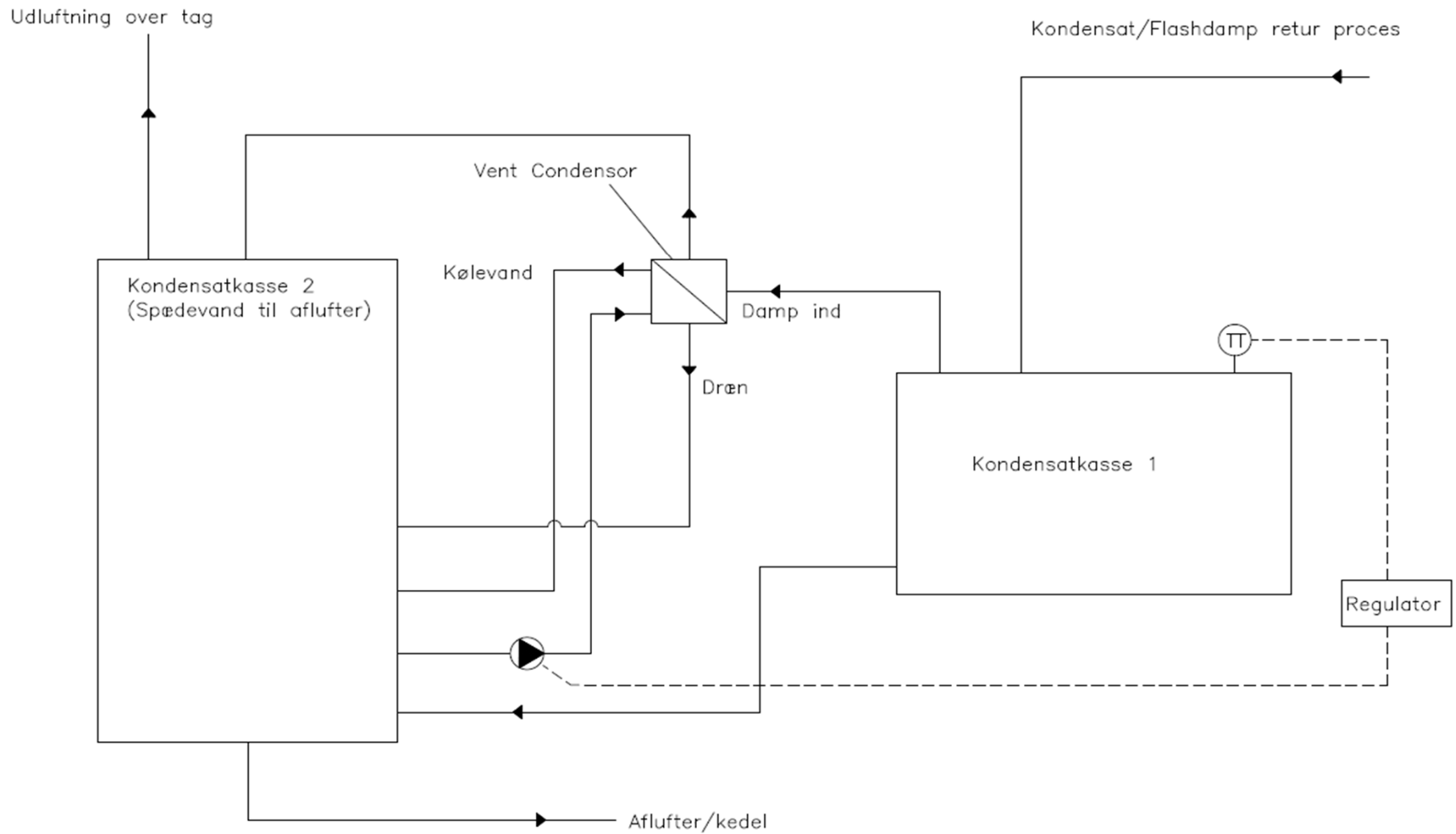


First for Steam Solutions

EXPERTISE | SOLUTIONS | SUSTAINABILITY

spirax
sarco

Flashdamp Condenser, Principskitse



Løsninger med optimal energiudnyttelse

First for Steam Solutions

EXPERTISE | SOLUTIONS | SUSTAINABILITY

Udnyt dampen bedst muligt

- Kondenser dampen ved lavest muligt damptryk/temperatur
- Her har du højeste energiindhold pr. kg. damp der kondenseres
- Dimensioner varmeveksler så der ikke opstår flashdamp. Men vær opmærksom på drænløsningen
- Færre belægninger (mindre service)

Damp tryk		Temperatur	Entalpi kJ/kg			Volumen tør mættet
			Væskevarme	Fordampnings-varme	Total-varme	
bar	kPa	°C	h_f	h_{fg}	h_g	m ³ /kg
0	0	100	419	2.257	2.676	1,673
1	100	120	506	2.201	2.707	0,881
2	200	134	562	2.163	2.725	0,603
3	300	144	605	2.133	2.738	0,461
4	400	152	671	2.108	2.749	0,374
5	500	159	641	2.086	2.757	0,315
6	600	165	697	2.066	2.763	0,272
7	700	170	721	2.048	2.769	0,24
8	800	175	743	2.031	2.774	0,215
9	900	180	763	2.015	2.778	0,194
10	1000	184	782	2.000	2.782	0,177
11	1100	188	799	1.986	2.785	0,163
12	1200	192	815	1.973	2.788	0,151
13	1300	195	830	1.960	2.790	0,141
14	1400	198	845	1.947	2.792	0,132

First for Steam Solutions

EXPERTISE | SOLUTIONS | SUSTAINABILITY

spirax
sarco



introducing

the new **Spirax EasiHeat™**
incorporating SIMS technology

First for Steam Solutions

EXPERTISE | SOLUTIONS | SUSTAINABILITY

the new **Spirax EasiHeat™ HTG**

& the new **Spirax EasiHeat™ DHW**

heat transfer solutions

Spirax EasiHeat™ HTG
incorporating **SIMS TECHNOLOGY**

spirax/sarco

First for Steam Solutions

EXPERTISE | SOLUTIONS | SUSTAINABILITY

The brochure cover for the Spirax EasiHeat™ HTG features a central image of the industrial steam heating unit. It is surrounded by four smaller inset photos: a technician working on a component, a control panel, a woman in a hard hat, and a close-up of a valve. The text 'heat transfer solutions' is at the top left, and the product name 'Spirax EasiHeat™ HTG' is prominently displayed in a dark blue banner, with 'incorporating SIMS TECHNOLOGY' below it. The Spirax Sarco logo and tagline are at the bottom.

heat transfer solutions

Spirax EasiHeat™ DHW
incorporating **SIMS TECHNOLOGY**

spirax/sarco

First for Steam Solutions

EXPERTISE | SOLUTIONS | SUSTAINABILITY

The brochure cover for the Spirax EasiHeat™ DHW features a central image of the industrial hot water heating unit. It is surrounded by four smaller inset photos: a technician working on a component, a control panel, a woman on a mobile phone, and a close-up of a valve. The text 'heat transfer solutions' is at the top left, and the product name 'Spirax EasiHeat™ DHW' is prominently displayed in a dark blue banner, with 'incorporating SIMS TECHNOLOGY' below it. The Spirax Sarco logo and tagline are at the bottom.

First for Steam Solutions

EXPERTISE | SOLUTIONS | SUSTAINABILITY

spirax/sarco

meeting the challenge of **managing energy costs**



First for Steam Solutions

EXPERTISE | SOLUTIONS | SUSTAINABILITY

Spirax EasiHeat™ HTG

a complete, compact, ready to use steam to water heat transfer package with innovative monitoring system

delivers superior energy efficient performance

lowers costs, tackles waste and mitigates environmental impact

programmable timer further increases efficiency

touchscreen SIMS technology as standard

spirax
sarco

the more **energy efficient** alternative

Spirax EasiHeat™ HTG



Benefits

- energy efficient – helps reduce costs and reduces CO₂
- components precisely sized to provide optimum performance
- compact – core unit occupies on 1.8m³, up to 3.9m³ for the largest output unit
- low cost of ownership – high quality low maintenance components reduce maintenance, and seldom requires annual insurance inspection
- quicker, easier installation

First for Steam Solutions

EXPERTISE | SOLUTIONS | SUSTAINABILITY

spirax
sarco

the more **energy efficient** alternative

Spirax EasiHeat™ HTG

Advanced heating controls delivered with S.I.M.S technology

The Spirax EasiHeat™ HTG incorporating S.I.M.S technology now features a 7 day programmable time clock, like the one found on many central heating systems in your home. The Spirax EasiHeat™ HTG is already efficient but now you can save even more energy by only having your heating system on when you need it.

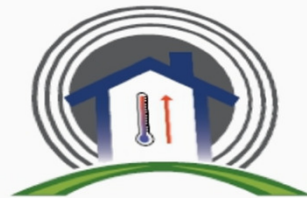


Outside weather compensation automatically adjusts the heating set point, so if the outside temperature rises the Spirax EasiHeat™ HTG will automatically lower its temperature output.

This advanced control method further improves energy efficiency and maintains a comfortable working environment.



As the outside weather temperature increases the temperature in the heating system is reduced, increasing system efficiency.



As the outside weather temperature reduces the temperature in the heating system is increased.

- features a 7 day programmable time clock so you can have your system on only when needed
- outside weather compensation auto-adjusts the heating set point, so if the outside temperature rises the system will lower its temperature output
- advanced control method further improves energy efficiency and maintains a comfortable working environment

First for Steam Solutions

EXPERTISE | SOLUTIONS | SUSTAINABILITY

spirax
sarco

meeting the challenge of **managing energy costs**



Spirax EasiHeat™ DHW

a complete, compact and energy efficient heat transfer solution

delivers constant supply of domestic or process hot water at a stable temperature on demand

... even with sudden load changes

reduces energy costs, tackles waste, and mitigates environmental impact

touchscreen SIMS technology as standard

First for Steam Solutions

EXPERTISE | SOLUTIONS | SUSTAINABILITY

spirax
sarco

the more **energy efficient** alternative



First for Steam Solutions

Spirax EasiHeat™ DHW

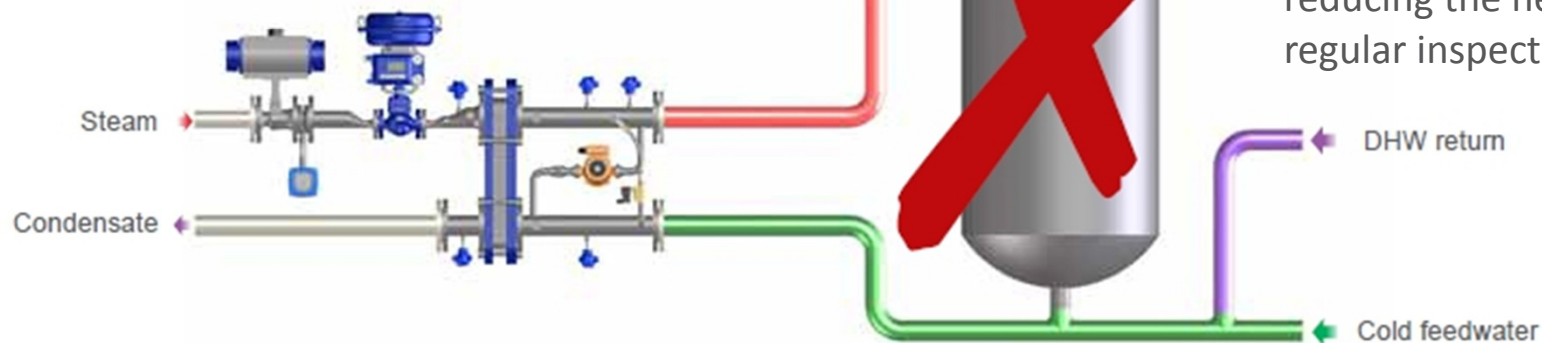
Benefits

- energy efficient – helps reduce costs and reduces CO₂
- instantaneous hot water without storage – reduces energy loss, reduces risk of Legionella growth
- compact – core unit occupies on 2m³, up to 3.8m³ for the largest output unit

the more **energy efficient** alternative

Spirax EasiHeat™ DHW

- High quality, low maintenance components reduce maintenance costs
- Seldom requires an insurance inspection due to the very low volume of the heat exchanger



- No storage or buffer tanks - eradicates a potential breeding place for bacteria, reducing the need for regular inspections

First for Steam Solutions

EXPERTISE | SOLUTIONS | SUSTAINABILITY

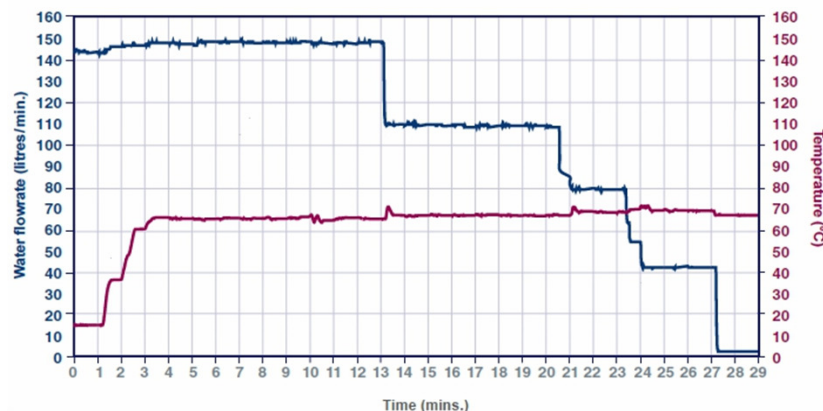
spirax
sarco

the more **energy efficient** alternative

Spirax EasiHeat™ DHW

The Spirax EasiHeat™ DHW performance (with no buffer tank or storage vessel)

The graph below shows the performance of the Spirax EasiHeat™ DHW on instantaneous duty. The application is water heating, with a high secondary temperature rise and large sudden load changes; a duty typical of process hot water. The graph shows that even with the large sudden load changes, a safe, constant hot water temperature is maintained.



- Water flowrate
This is the flowrate of cold water being delivered to the Spirax EasiHeat™ DHW.
- Water temperature
This is the temperature of hot water being delivered by the Spirax EasiHeat™ DHW.

The graph illustrates the performance of the Spirax EasiHeat™ DHW on instantaneous duty.

The application is water heating, with a high secondary temperature rise and large sudden load changes; a duty typical of process hot water.

The graph shows that even with the large sudden load changes, a safe, constant hot water temperature is maintained.

Spirax EasiHeat™ key features



no waste design

compact design

touch screen control

unique Spirax intelligent control

pre-assembled tested unit

integrated communications

First for Steam Solutions

EXPERTISE | SOLUTIONS | SUSTAINABILITY

spirax
sarco

Introducing **SIMS** technology



First for Steam Solutions

EXPERTISE | SOLUTIONS | SUSTAINABILITY

spirax/sarco

Spirax EasiHeat™ incorporating SIMS technology



“ We wanted to make energy, CO₂ and carbon information readily available to the customer. With S.I.M.S technology, Energy Managers have access to key information to produce their reports simply and quickly.”

Chris Rowlands,
Group Product Manager for Heat Transfer Solutions

SIMS technology is the new energy monitoring system which allows interrogation of energy, CO₂ and carbon data from any location.

A wide number of communication protocol options provides the Spirax EasiHeat™ with the flexibility to integrate with many existing communication and building management systems.

S.I.M.S technology **key features**



7" colour, intuitive **touch screen control** with advanced graphics as standard

Complete **visual access** to all parameters. Easy to interrogate and obtain the required data

No complex controls – SIMS technology can be operated with limited previous controls & instrumentation experience

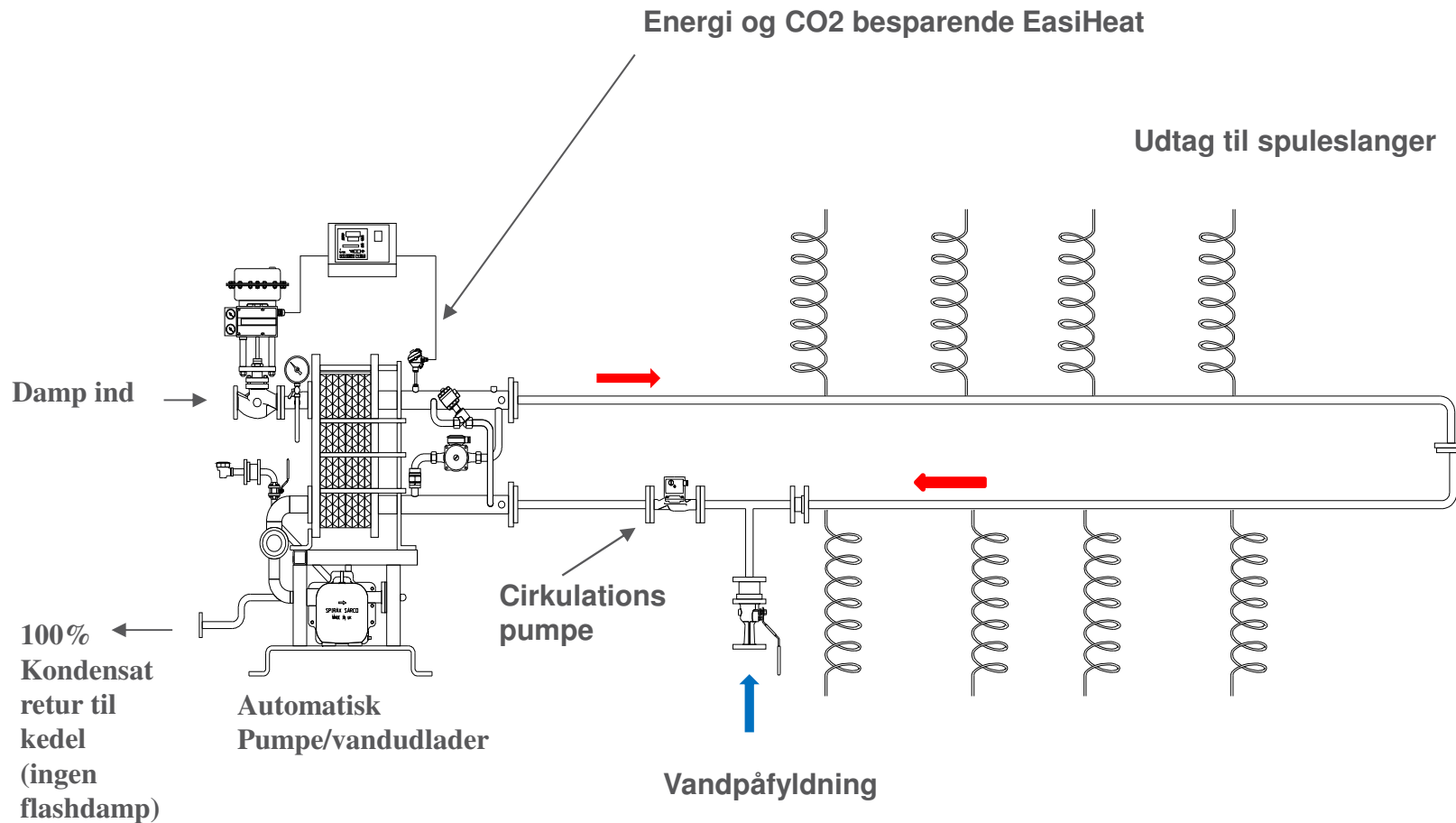
Access and control from **any location**, globally

Compatible with Ethernet, Modbus, Profibus, CANopen, EtherCAT and many more

Optional web server allows **secure remote access** to monitor and control the unit via standard web browser

Generates text or email alerts if an event occurs or as a service reminder

Rengøringsystem UDEN varmtvandsbeholder



First for Steam Solutions

EXPERTISE | SOLUTIONS | SUSTAINABILITY

spirax
sarco

Energi og CO2 besparende varmeveksling

Sizing Suite Program



DHW HTG

Domestic Hot Water



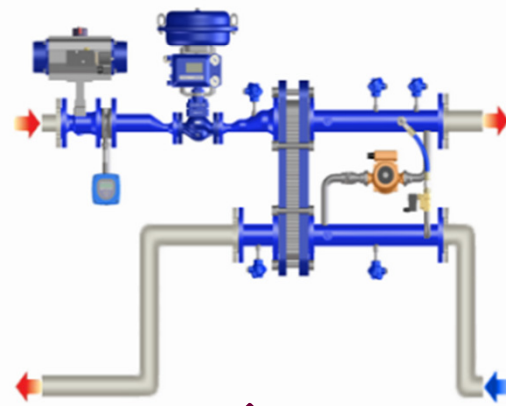
Primary

Line Pressure
8 bar gauge

Design Steam Flow
857,02 kg/h

System Backpressure
0,3 bar gauge

Condensate Temperature
95 °C



Secondary

Output Temperature
65 °C

Pre-Heated Temperature
16,65 °C

Input Temperature
10 °C

Flow Rate
7,82 m³/h

Power Requirement
500 kW

Exit temperature with no sub-cooling	45,28 °C
Flash steam loss with no sub-cooling	15,44 kg/h
Sub-cooling	59,28 °C
New Steam Load	753,44 kg/h
Steam loss with sub-cooling	0 kg/h
Cost of steam per 1,000 kg	1,50 kWh
Usage	
Hours Per Day	
Hours Per Year	
Fuel	Natural Gas
Energy Saving	236664,91 kWh
CO2 Saving	44,97 tonnes/year
Carbon Saving	12,26 tonnes/year

Tilbagebetalingstid kan blive meget attraktiv! Jo mere du bruger den mere du bruge vekslereuniten desto hurtigere betaler den sig hjem



Ny energibesparende Easiheat - Priseksempel

Type EHD3PPNPT-HLG1-ER1: Pris kr. 331.678,00

- High limit
- APT14
- Dampmåler (energimåler)
- SIMS teknologi: Level 1; SMS + E-mail

Varme Facts

- Dampforbrug: 753 kg/h (Normalt 857 kg/h)
- Årlige driftsbesparelser: 64.904 kr. (i forhold til ikke - energibesparende løsninger)
- Energiltilskud v/25 øre pr. kW: $236664 \times 0,25 = 59.166$ kr.

Tilbagebetalingstid

- Salgspris inkl. tilskud: $331.678 - 59.166 = 272.512$ kr.
- Tilbagebetalingstid: $272.512 / 64.904 = 4,2$ år

Primary

Line Pressure: 8 bar gauge

Design Steam Flow: 857,02 kg/h

System Backpressure: 0,3 bar gauge

Condensate Temperature: 95 °C

Secondary

Output Temperature: 65 °C

Pre-Heated Temperature: 16,65 °C

Input Temperature: 10 °C

Flow Rate: 7,82 m³/h

Power Requirement: 500 kW

Options

Condensate Removal: Automatic Pump Trap (APT)

Actuator: Pneumatic

High Limit Options: Integrated High Limit

Design Code: PED

Gasket: EPDMP

Service Offering: No Service Offering

Isolation: None

Remote Access: Level 1 - SMS + Email

Communications: None

Energy Monitoring

Jacking Wheels

12 måneders serviceaftale

Exit temperature with no sub-cooling	154,28 °C	Sub-cooling	59,28 °C
Flash steam loss with no sub-cooling	76,72 kg/h	New Steam Load	753,44 kg/h
Cost of steam per 1,000 kg	kr 200	Flash steam loss with sub-cooling	0 kg/h
Usage		Fuel	Natural Gas
Hours Per Day	8	Days Per Week	5
Weeks Per Year	45	Hours Per Year	1800
<input type="checkbox"/> Override		Diversity Factor	1

Annual Steam Cost	kr 308525,44	Annual Fuel Saving	236664,91 kWh
Annual Flash Steam Loss Saving	kr 27618,31	CO2 Saving	14,87 tonnes/year
Annual Steam Load Saving	kr 37286,82	Carbon Saving	12,26 tonnes/year
Total Annual Saving	kr 64904,13		
New Annual Steam Cost	kr 271239,62		

Løsninger med effektiv varmeveksling af returcondensat

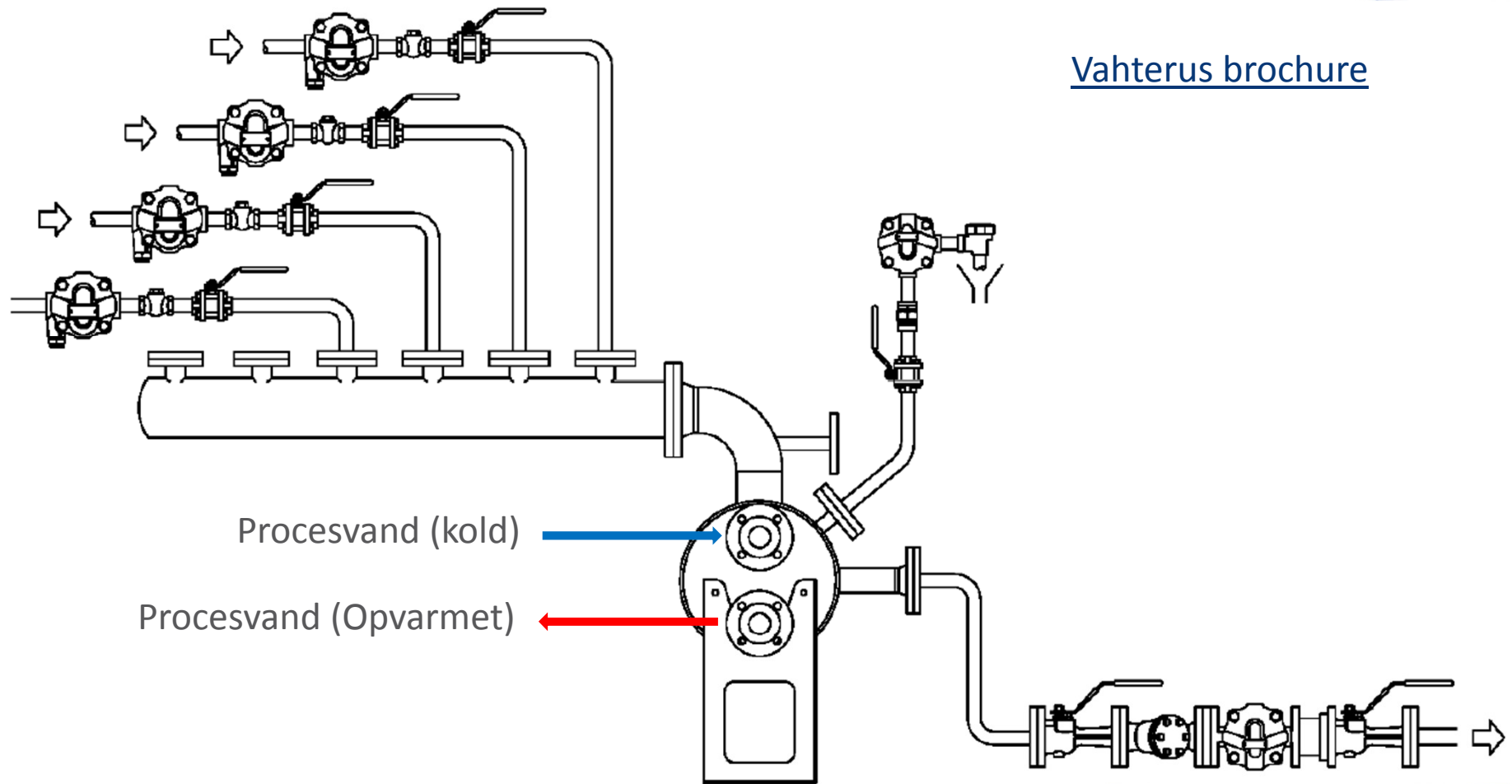
First for Steam Solutions

EXPERTISE | SOLUTIONS | SUSTAINABILITY

ICHRU

Inline Condensate Heat Recovery Unit

[Vahterus brochure](#)



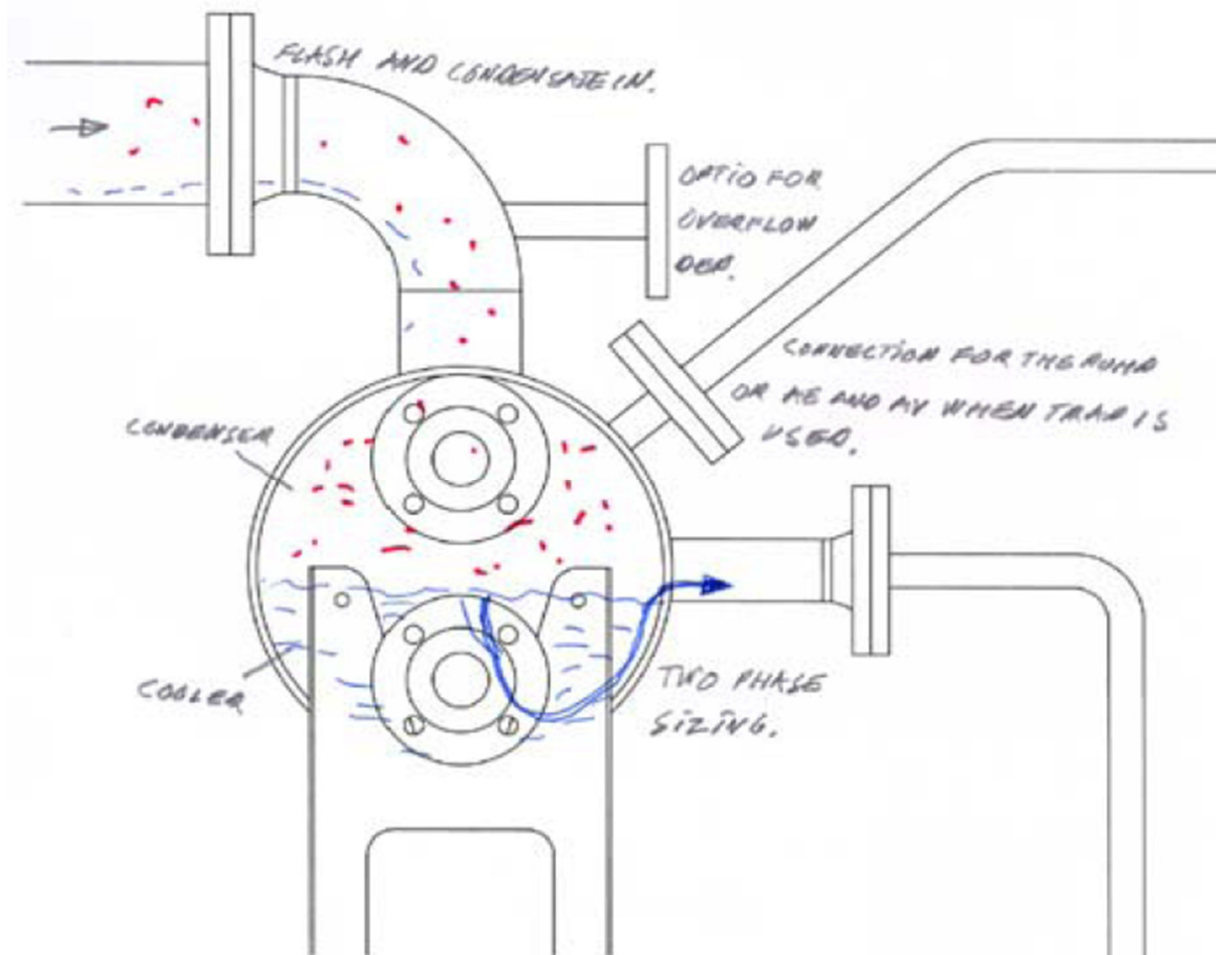
First for Steam Solutions

EXPERTISE | SOLUTIONS | SUSTAINABILITY

spirax
sarco

ICHRU

Inline Condensate Heat Recovery Unit

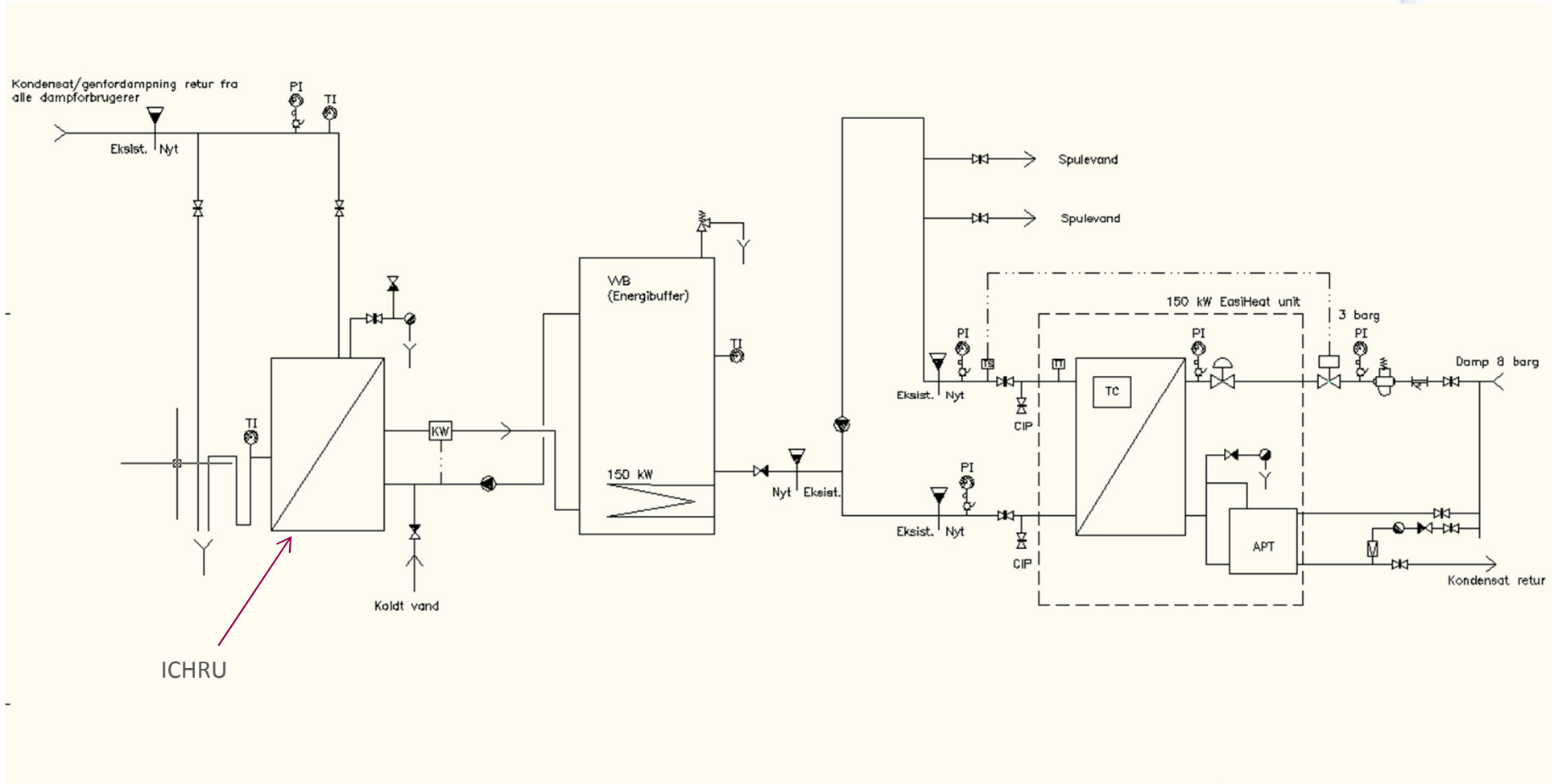


First for Steam Solutions

EXPERTISE | SOLUTIONS | SUSTAINABILITY

spirax
sarco

ICHRU Installationseksempel



First for Steam Solutions

EXPERTISE | SOLUTIONS | SUSTAINABILITY

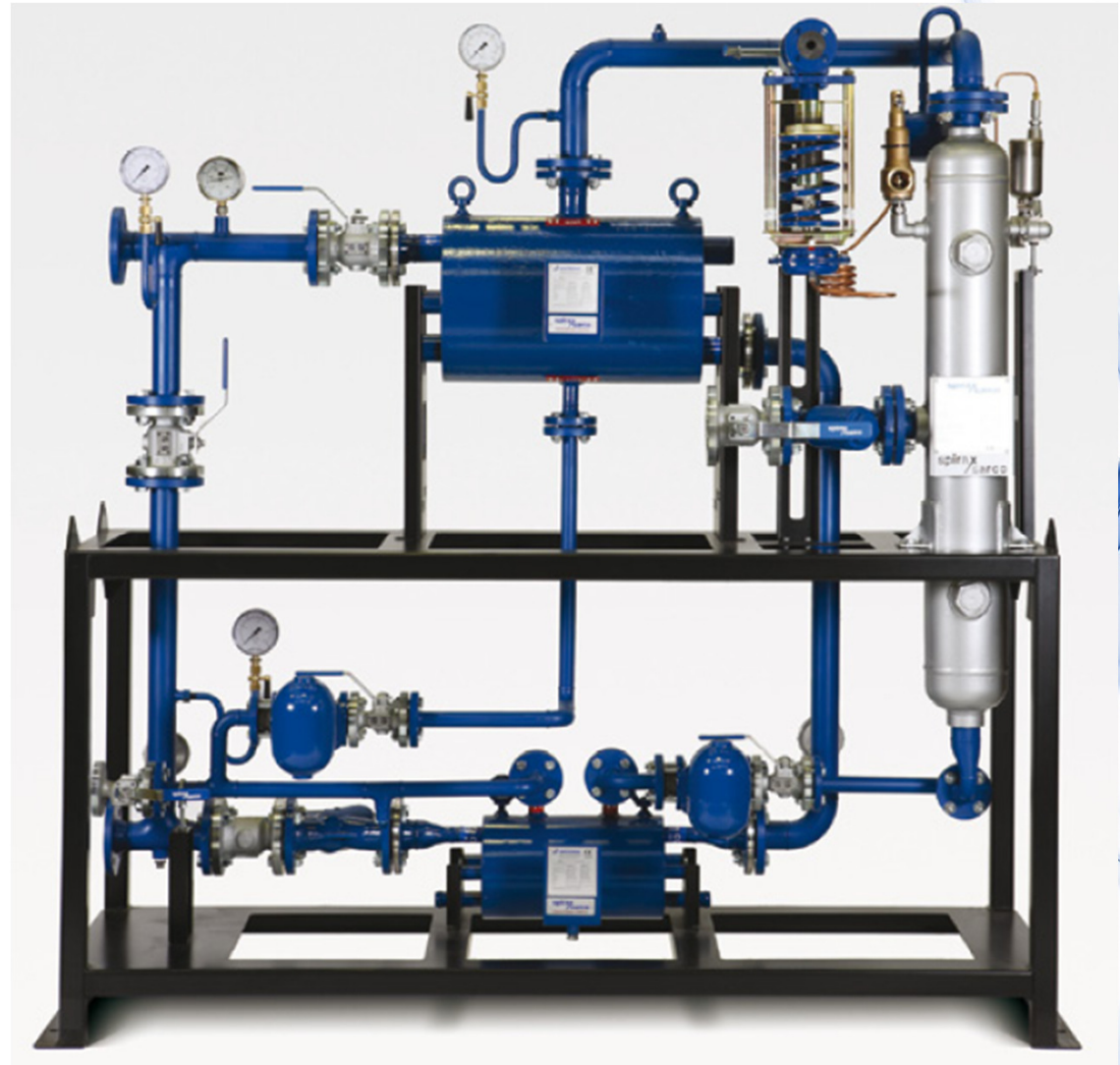
**spirax
sarco**

Standard FREME Unit

- Prisingende!

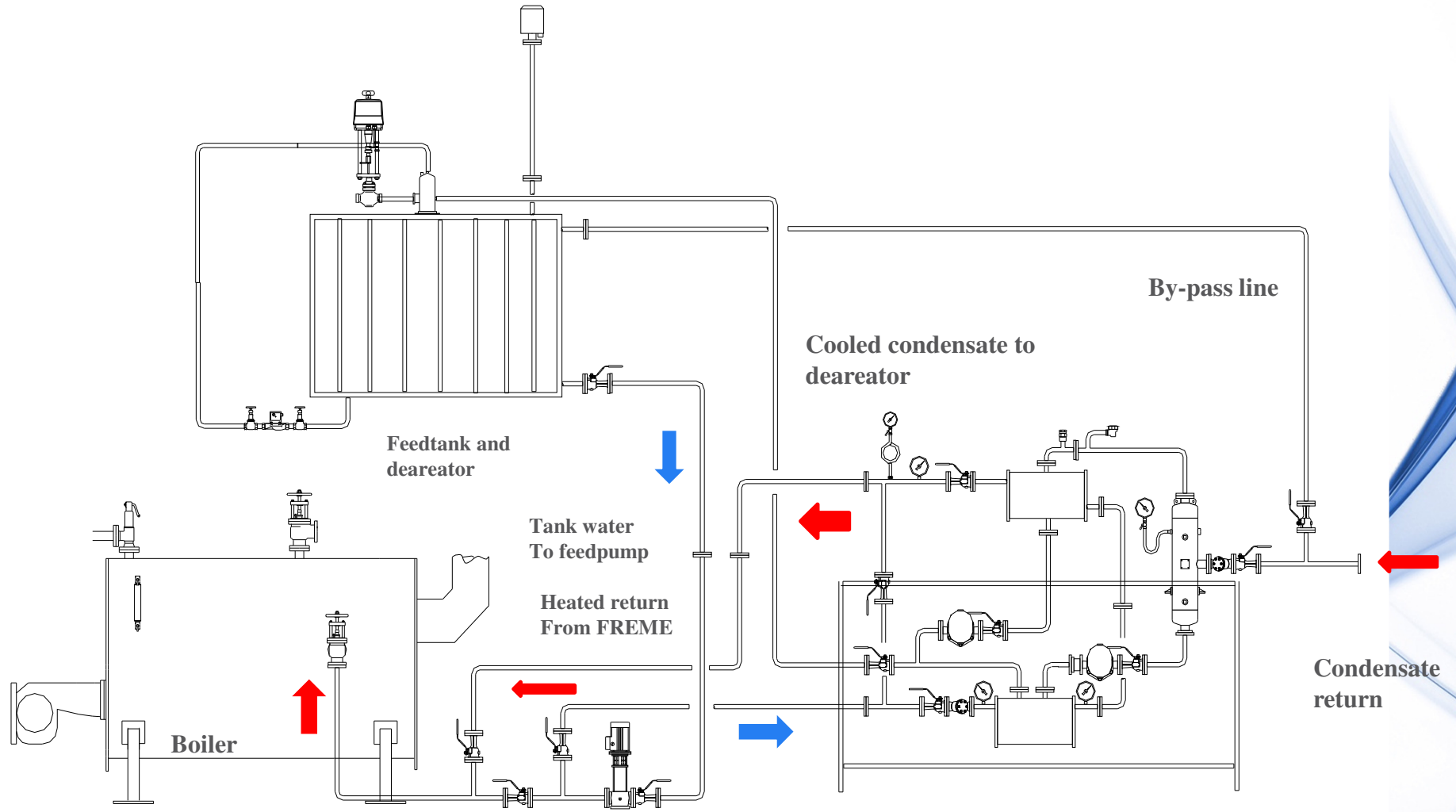


First for Steam Solutions



**spirax
sarco**

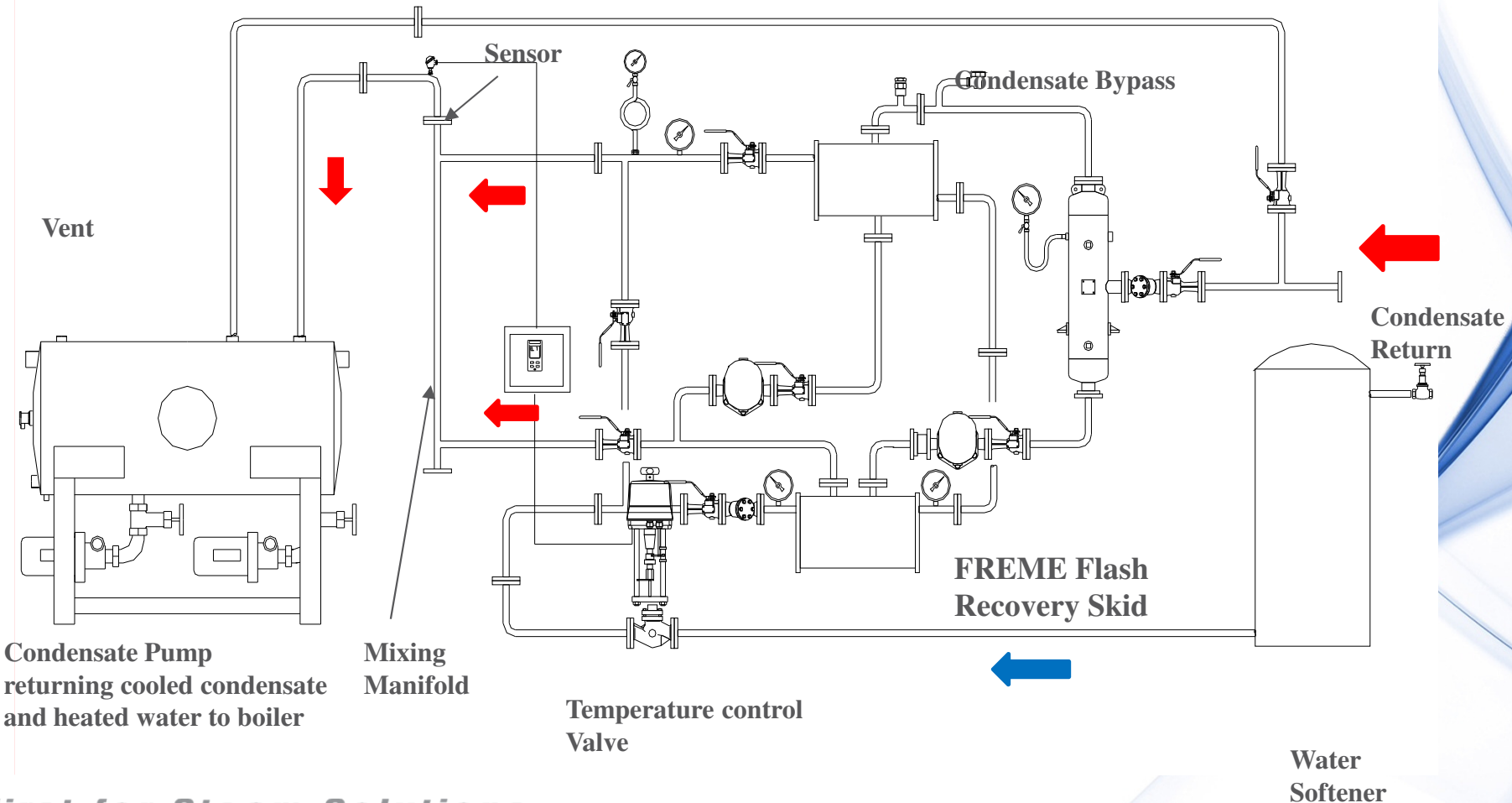
Standard FREME Flash Recovery Package: Boiler Application



First for Steam Solutions By-pass valve

FREME Flash Condensing Package

Standard FREME Flash Recovery Package: Boiler Feedwater Heater

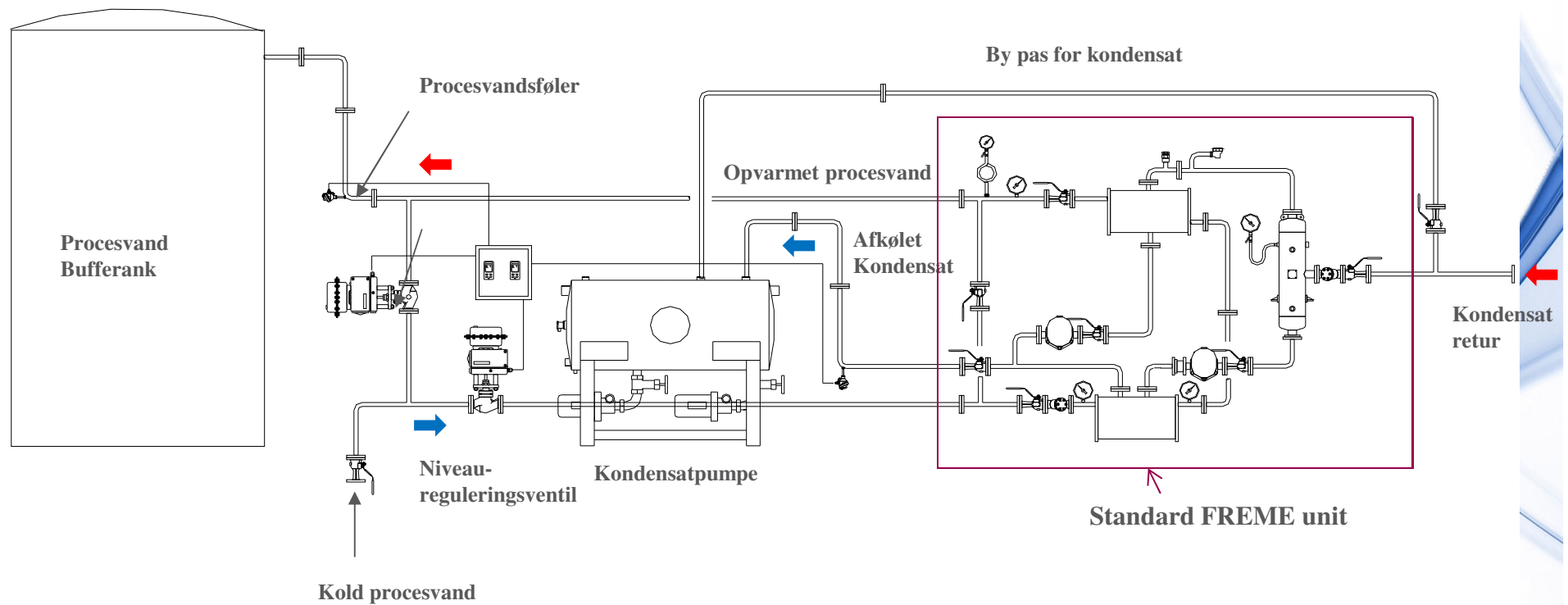


First for Steam Solutions

EXPERTISE | SOLUTIONS | SUSTAINABILITY



Standard FREME Unit: Procesvandsforvarmer



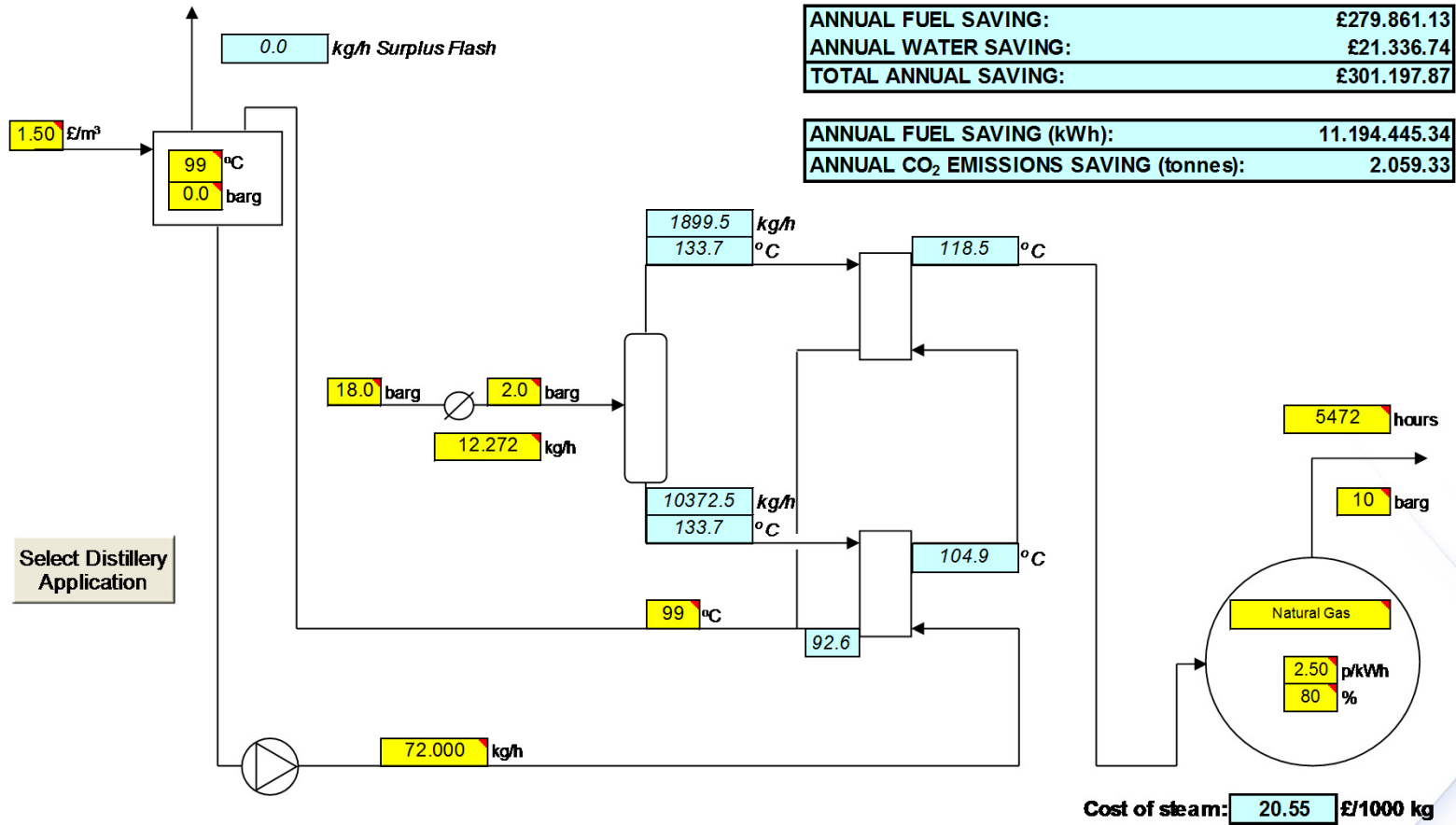
First for Steam Solutions

EXPERTISE | SOLUTIONS | SUSTAINABILITY

spirax
sarco

Konfigurering af FREME Unit

VERSION 1.3



First for Steam Solutions

EXPERTISE | SOLUTIONS | SUSTAINABILITY



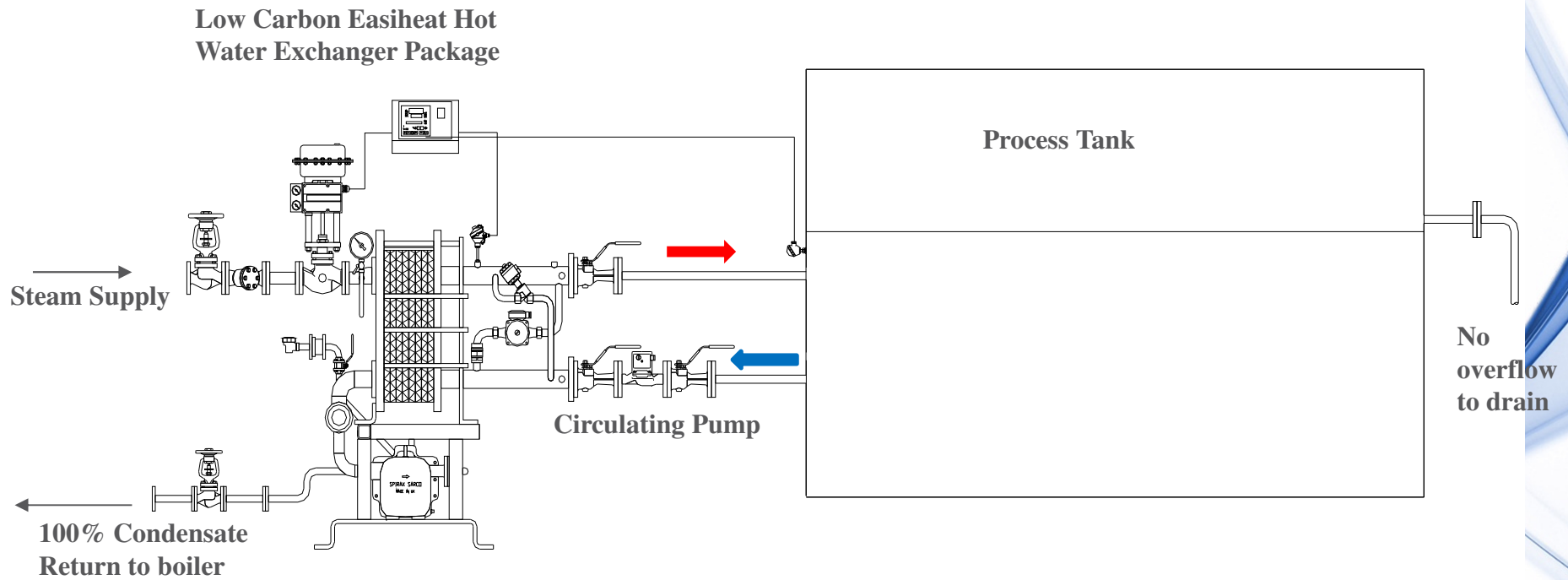
De Mulder - cuts energy costs by 20%

- De Mulder & Sons in Nuneaton is a by-product processing plant
- A flash steam recovery system is delivering direct energy savings of 10%, plus a further 10% of indirect savings



First for Steam Solutions

External Heater replacing heating coil or direct injection on Process Tank



First for Steam Solutions

EXPERTISE | SOLUTIONS | SUSTAINABILITY

spirax
sarco

Heat Recovery from Effluent

First for Steam Solutions

EXPERTISE | SOLUTIONS | SUSTAINABILITY

Problems associated with hot effluent going to drain

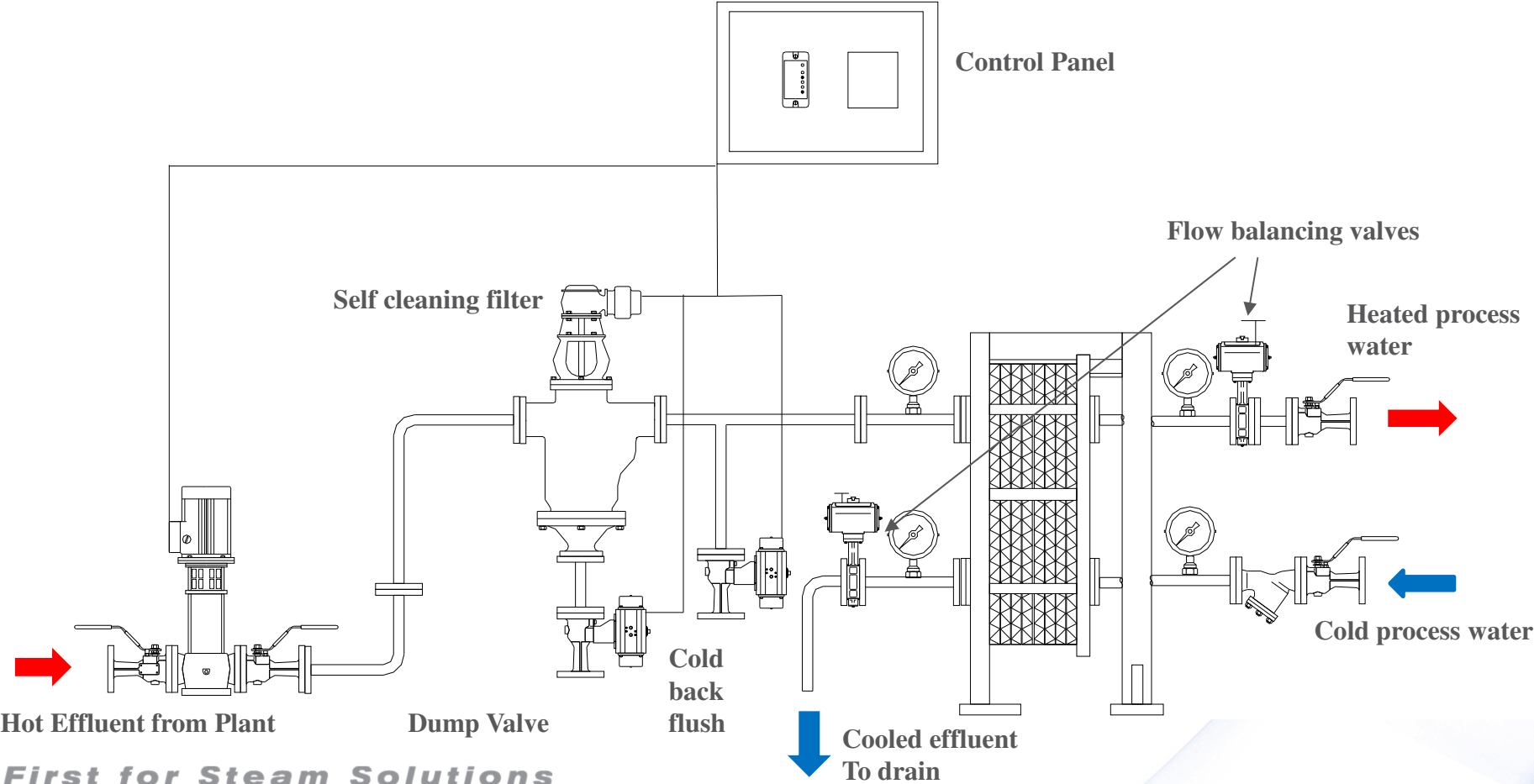
- High quality energy going to drain
- Effluent contaminated with solids
- Effluent treatment costs
- Cold water on re-fill of process
- Longer heat up times.
- Start up can cause boiler priming or lockout
- Steam starvation on heat up can cause quality problems elsewhere in plant

First for Steam Solutions

EXPERTISE | SOLUTIONS | SUSTAINABILITY

spirax
/sarco

Effluent Heat Recovery system

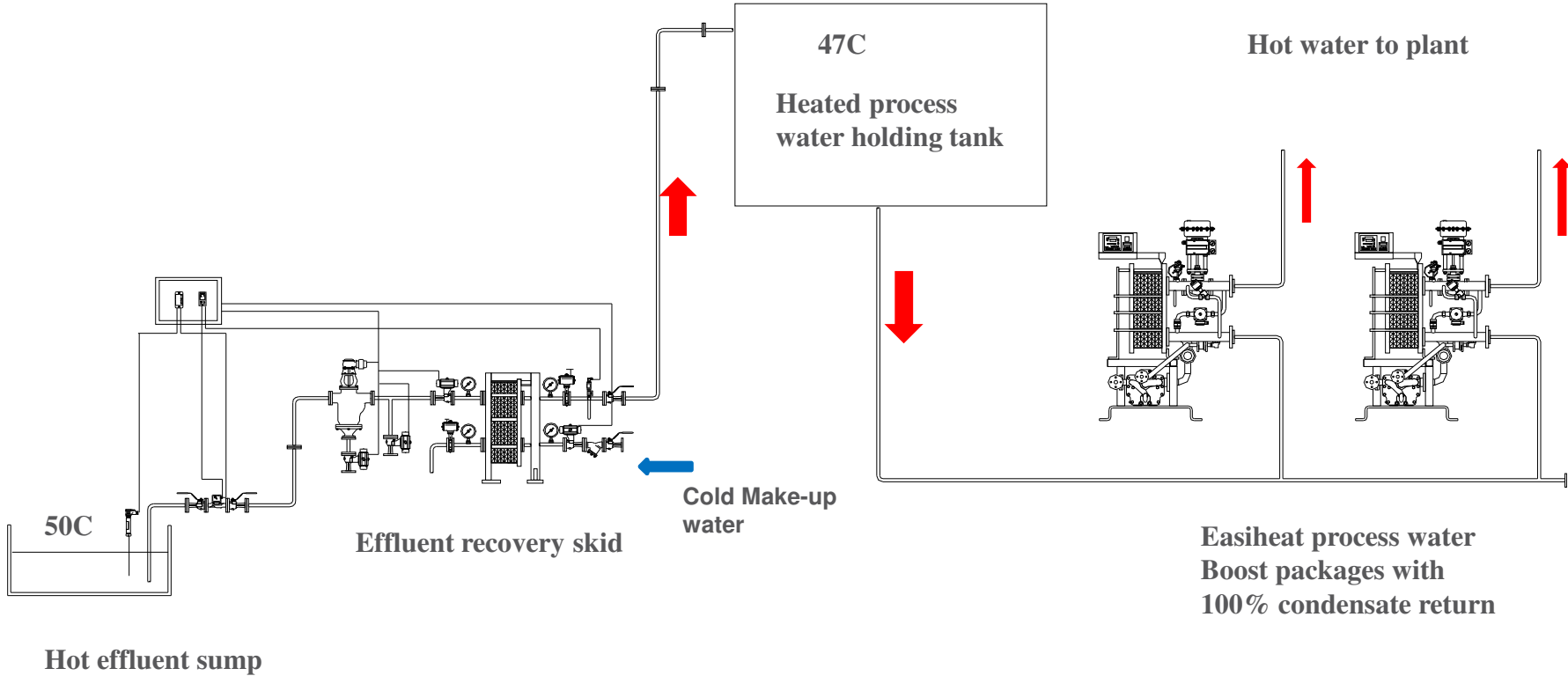


First for Steam Solutions

EXPERTISE | SOLUTIONS | SUSTAINABILITY



Process Plant with Effluent Heat Recovery System



First for Steam Solutions

EXPERTISE | SOLUTIONS | SUSTAINABILITY



Heinz – saves ?? a year

- Heinz saving 1,500 kW on heat recovery package

““It’s been in place for 18 months now and we are seeing excellent results from the heat recovery,”

Barry Aspey

Utilities Manager for Heinz



First for Steam Solutions

EXPERTISE | SOLUTIONS | SUSTAINABILITY

**spirax
sarco**

Heat Recovery from Cooling Towers

First for Steam Solutions

EXPERTISE | SOLUTIONS | SUSTAINABILITY

Losses from Cooling Tower Heat Recovery

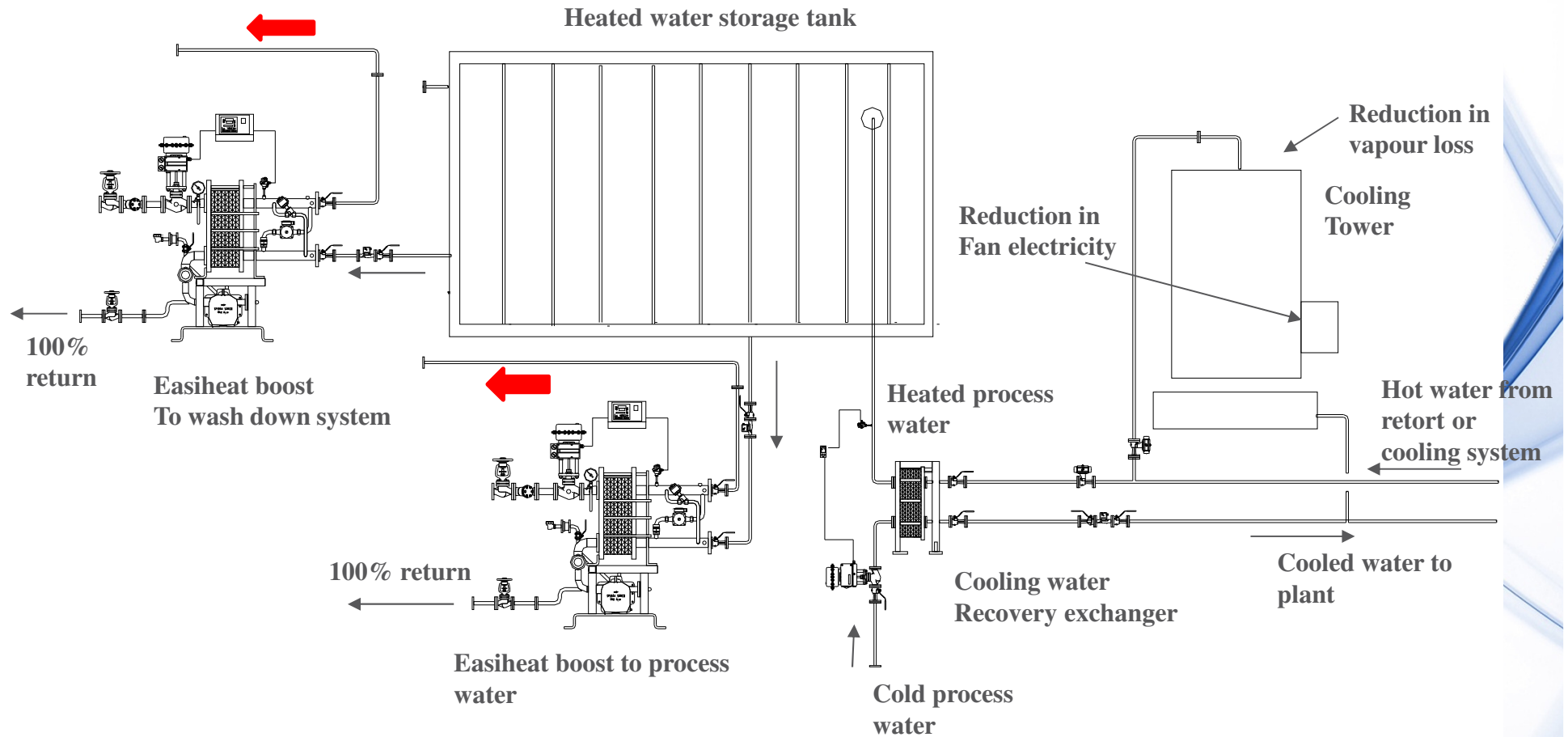
- Electrical running costs from cooling tower fans
- Vapour loss from cooling tower
- Heat normally lost at cooling tower
- Chemical dosing of cooling tower
- Flash losses from water heaters

First for Steam Solutions

EXPERTISE | SOLUTIONS | SUSTAINABILITY

spirax
/sarco

Cooling tower heat recovery system



First for steam solutions

EXPERTISE | SOLUTIONS | SUSTAINABILITY

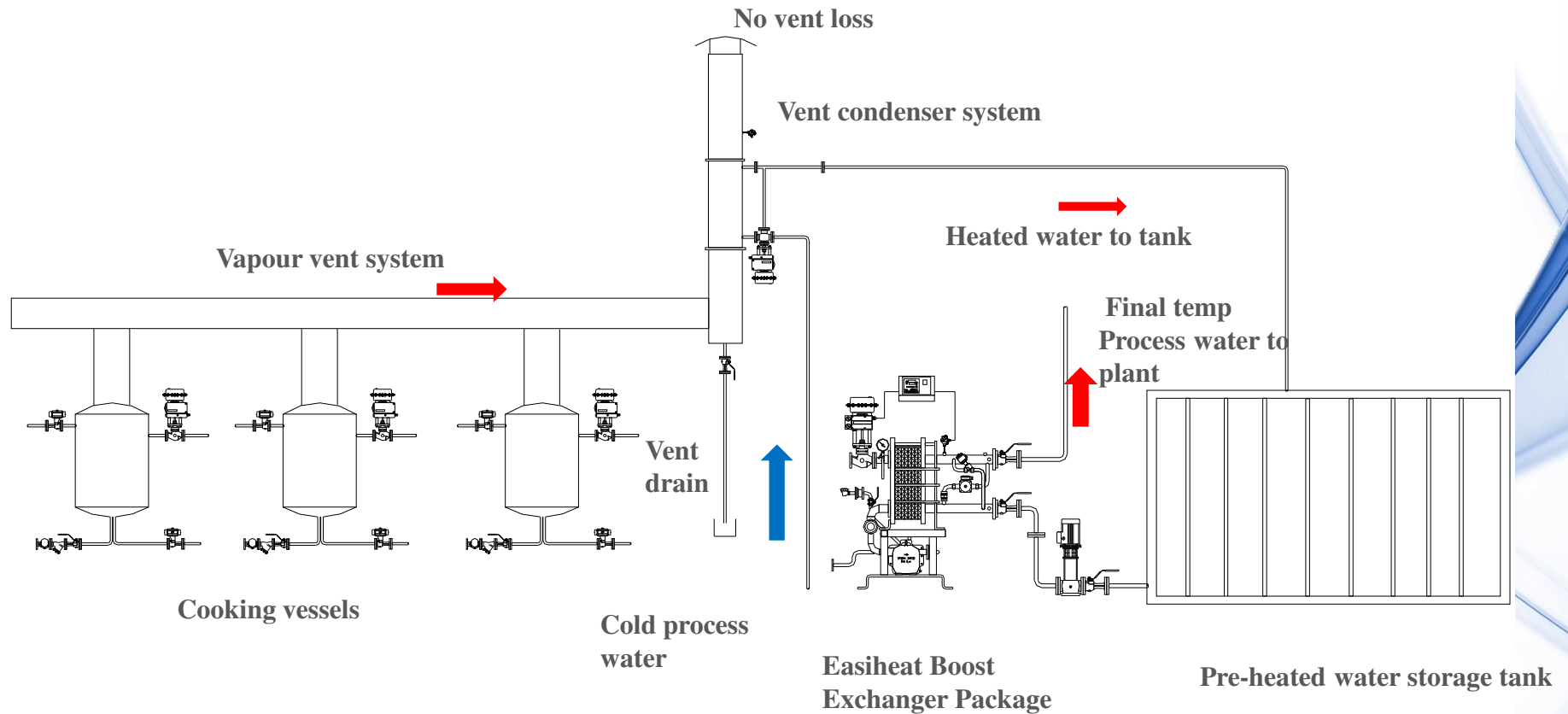
spirax sarco

Heat Recovery from Process Vents

First for Steam Solutions

EXPERTISE | SOLUTIONS | SUSTAINABILITY

Heat recovery from process vents



First for Steam Solutions

EXPERTISE | SOLUTIONS | SUSTAINABILITY

spirax
sarco



Heat Recovery from Contaminated Condensate

First for Steam Solutions

EXPERTISE | SOLUTIONS | SUSTAINABILITY

Contaminated Condensate

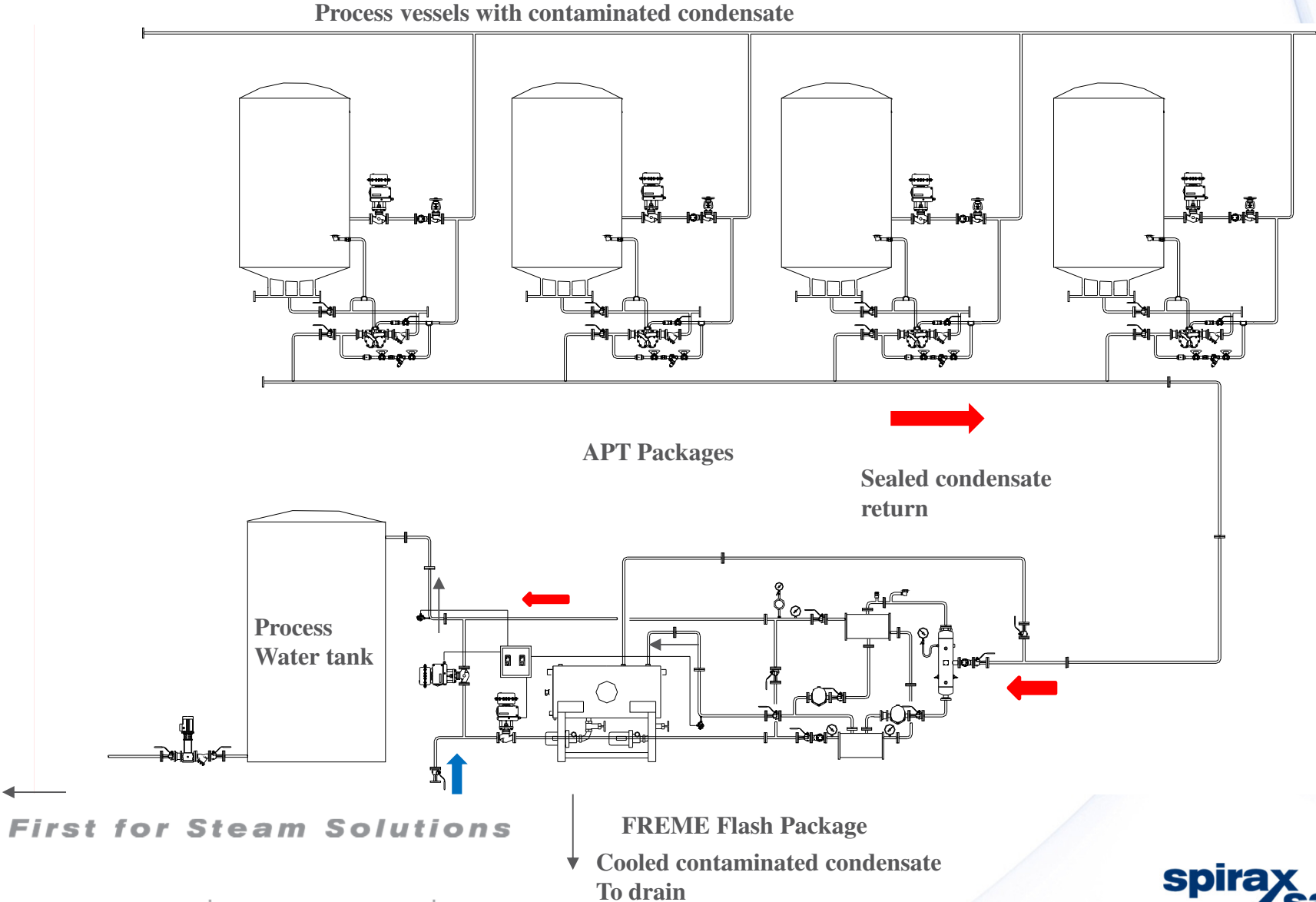
- Normally dumped to drain
- May contain contaminants not suitable for the boiler feed
- Condensate flashes off at point of discharge
- Remaining condensate at boiling point
- Must be cooled to 42C before entering drainage system
- Usually operates 24/7
- A large loss of energy and CO₂

First for Steam Solutions

EXPERTISE | SOLUTIONS | SUSTAINABILITY

spirax
/sarco

Heat Recovery from Contaminated Condensate



Løsninger til dampdistributionen

First for Steam Solutions

EXPERTISE | SOLUTIONS | SUSTAINABILITY

Energibesparelser ved dampdistributionen

- Vandudladerkontrol 2 gange årligt
- Reducere dampspild, energispild og CO2 udledning
- Forbedret varmeoverføringseffekt

Gennemsnitlig tilbagebetalingstid.
4 måneder!

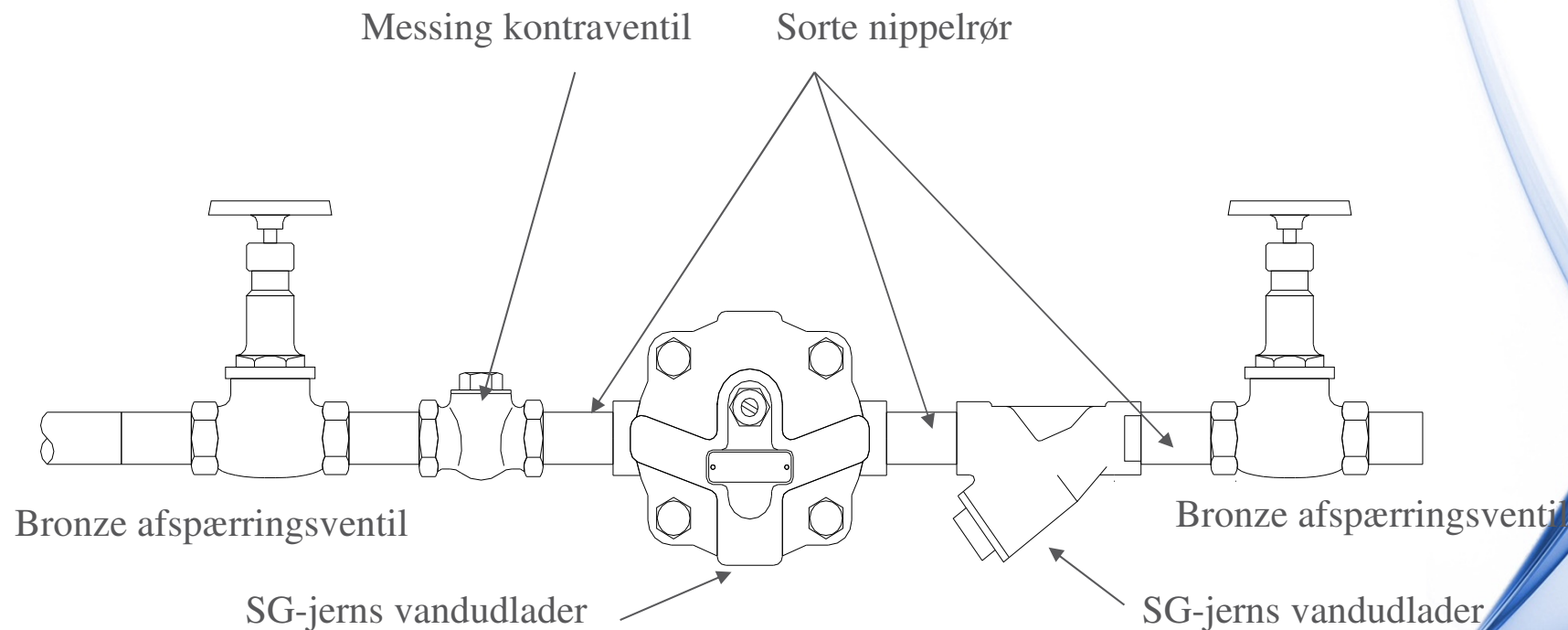


First for Steam Solutions

EXPERTISE | SOLUTIONS | SUSTAINABILITY

spirax
sarco

Standard vandudladerstation



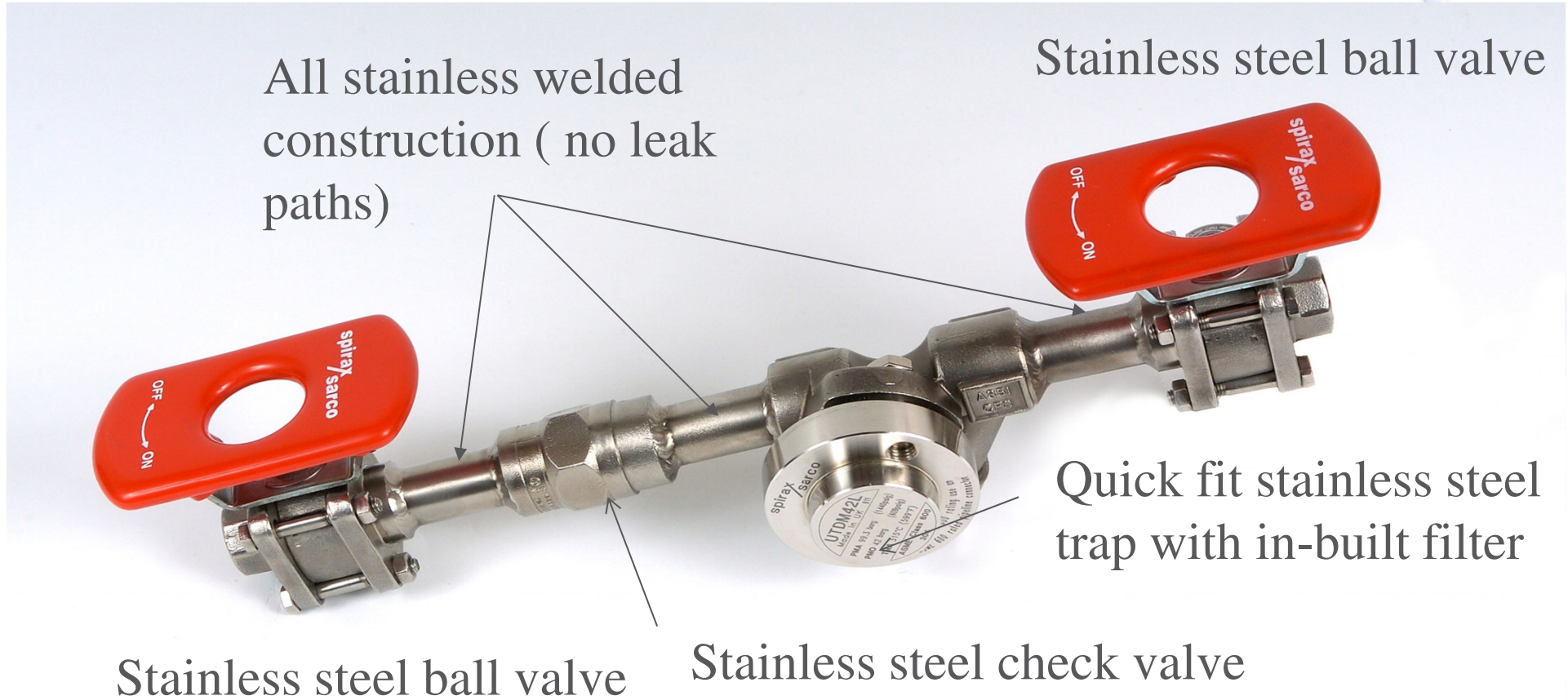
- **10 Potentielle lækage steder**
- **5 Komponenters skal installeres**
- **Multiple materialetyper**

First for Steam Solutions

EXPERTISE | SOLUTIONS | SUSTAINABILITY

spirax
sarco

Moderne vandudladerstation



First for Steam Solutions

EXPERTISE | SOLUTIONS | SUSTAINABILITY

**spirax
sarco**

Konklusion

- Disse er kun nogle få af de tilgængelige løsninger
- Systemerne kan leveres i samlede enheder for at lette installationen og eliminerer installationsfejl
- Reduktion af energiforbruget og CO2 i anlægget er let opnå og der kan oftest opnås attraktive tilskud til de energibesparende installationer
- Procesforbedring opnås altid

Besøg www.spiraxsarco.com/industry for flere løsninger til din industri

First for Steam Solutions

EXPERTISE | SOLUTIONS | SUSTAINABILITY

spirax
sarco

Spørgsmål

First for Steam Solutions

EXPERTISE | SOLUTIONS | SUSTAINABILITY