

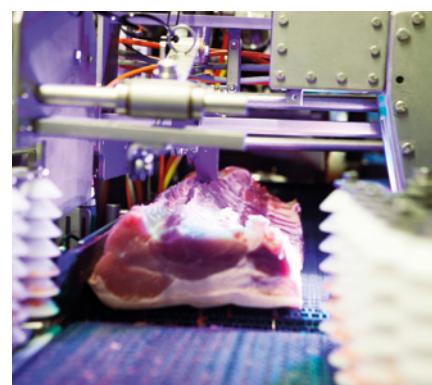


Meat Plant design

Master planning – Investing in the future

When you plan to invest in the future of your production facilities you may consider:

- To construct a new factory
- Extend capacities
- Automate processes
- Merger of productions



THE MOST SERIOUS problem with future is that nobody knows it precisely beforehand. DMRI can help you to maximize robustness of your investments by performing a Master Plan that is based on your company's vision and strategy and the Main Specification of the project. The Master Plan will expose your ideas to critical examination and it will substantiate your decision on whether to proceed or not.

Design and implementation of a modern meat plant requires all sorts of professional skills. DMRI provides you access to a whole range of practical and innovative competencies.

The DMRI master planning is all about taking a holistic approach and to incorporate all factors that influence the competitiveness. The Master Plan is a crucial step in the process from idea to realization.



Meat Plant design

Master planning – Investing in the future

THE REQUIREMENTS to a modern meat plant's performance are complex. Numerous considerations must be implemented in the design in order to make it successful and competitive. Whether your business strategy is directed at the bulk market, the retail market or the specialised market, you are facing similar challenges.

THE WAY FROM IDEA TO TAKING INTO OPERATION:

1	SCOPE
▼	
2	GENERAL DESIGN PLAN
▼	
3	MASTER PLAN
▼	
4	TENDER AND PROCUREMENT
▼	
5	CONSTRUCTION
▼	
6	TRAINING AND OPERATION

THE MASTER PLAN CONTAINS:

- Lay-out and specifications
- Products and processes
- Flexibility demands
- Services and utilities
- Logistics and traceability
- Hygiene and food safety
- Environmental aspects
- Construction works
- Budget estimate and economic analysis
- Time schedule

IN HIGHLIGHTS, YOUR BENEFITS OF A DMRI MASTER PLAN ARE OPTIMAL SOLUTIONS REGARDING:

- Automation
- Logistics
- Traceability
- Operational productivity
- Yield
- Animal welfare
- Environmental efficiency
- Hygiene and shelf life

ABOUT DMRI

DMRI is focusing our attention on methods and technologies for efficient production of safe meat products of a high quality at competitive prices. At the same time, DMRI is committed to enhancing the working environment and animal welfare as well as demonstrating due care to the external environment.

CONTACT

SENIOR CONSULTANT

Kim Schøtt Olsen

KIO@DTI.DK

+45 7220 2356

